

$$2 \times 6 = 12$$

 multiplication.com



**Shoe x Chick =
Elf**

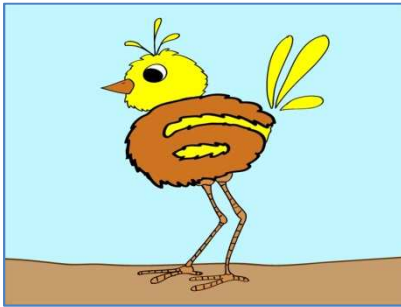
$$2 \text{ (Shoe)} \times 6 \text{ (Chick)} = 12 \text{ (Elf)}$$

Pictures

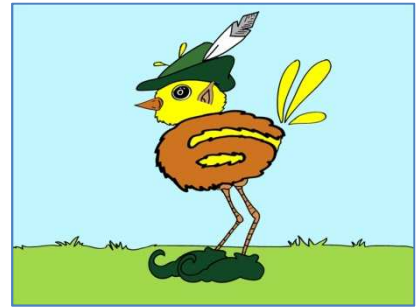
2 = Shoe



6 = Chick



12 = Elf



Story

A teacher decided to put on a winter play. A chick was chosen to be an elf, one of Santa's special helpers. The chick was very excited! She rushed home and begged her mom to make her an elf costume. On the day of the play, the little CHICK (6) wore curly-toed SHOES (2) and had fun pretending to be an ELF (12).